



Acrovyn® 4000 Imagine Panels

Acrovyn® 4000 Imagine Panels are as durable and scratch resistant as regular Acrovyn Panels, with the added benefit of full photo reproduction, giving you the freedom to design your impact protection panels.

C/S Acrovyn® 4000 Imagine Panels offer bespoke protection for your internal surfaces, giving you the flexibility to embed any image, any size in Acrovyn sheet. Helping you create a healing and calming environment for both patients and staff. Acrovyn® 4000 Imagine Panels don't chip, dent, scratch or fade, leaving your walls and images intact.

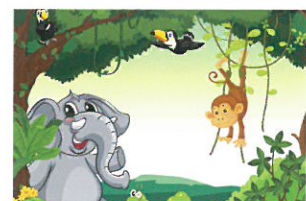
Intelligent use of soothing imagery can reduce stress

Aesthetics are an important aspect in any retrofit or new build healthcare facility. Decorative finishes and hygienic surfaces are design elements which can provide patients with an altogether more calming, considerate place to recuperate.

Forward thinking hospitals often look for solutions that provide aesthetic appeal as well as offering protection from the inevitable wear and tear in high traffic areas, Acrovyn® 4000 Imagine Panels do just that.

Imagine Panels

- ✓ High quality photo reproduction
- ✓ Impact resistant Acrovyn sheet
- ✓ Scratch & chip resistant surface
- ✓ Lightfast
- ✓ Complete design flexibility
- ✓ Approved Document B Fire Compliant
- ✓ Improve patient environment
- ✓ Incorporate way finding imagery
- ✓ Easy to clean and maintain



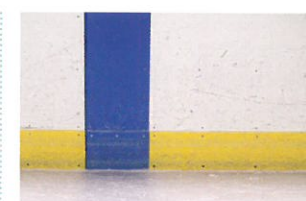
1 Children's wards. Imagine Panels incorporating fun and creative images will brighten the ward and make the children feel more at home.



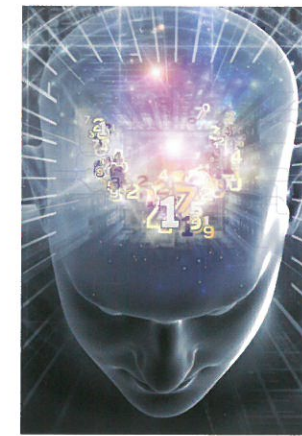
2 Way finding. Acrovyn Imagine Panels can incorporate signage and can be cut into shapes to suit any design application.



3 Soothing imagery can have a positive effect on patient recovery. Located throughout a hospital Imagine Panels can be applied directly to the wall or mounted on a board.



4 Protect. Imagine Panels help to protect your walls from impact damage, reducing maintenance costs and brightening the interior.

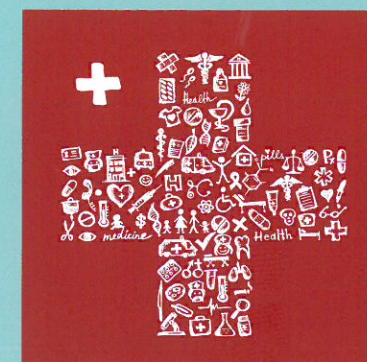


Care for the environment

Acrovyn® 4000 Imagine Panels are formulated with **no PVC (Polyvinyl Chloride), no PBT (Persistent Bioaccumulative Toxins) and no BPA (Bisphenol A)** or any halogenated fire-retardants.

Acrovyn® 4000 Imagine Panels contain no chemicals of concern and are 100% recyclable making them better for the environment and your patients.

- PVC Free
- PBT Free
- 100% Recyclable
- Scratch Resistant
- High Impact Resistance
- Chemically Resistant
- Bacterial & Fungal Resistant
- Easy to Clean



CS Construction Specialties™

Contact Us

Construction Specialties (UK) Limited

For more information about Acrovyn® 4000 Imagine Panels please get in touch

Tel: +44 (0)1296 652800

Web: www.c-sgroup.co.uk

Email: enquiries@c-sgroup.co.uk

Twitter: [@csgroupnews](https://twitter.com/csgroupnews)